



**CANBERRA**  
BUSINESS & TECHNOLOGY COLLEGE

**CPC40120**

**Certificate IV Building and Construction (Building)**



**Canberra, Australia**

---

The Canberra Training School Pty Ltd t/a Canberra Business & Technology College  
Unit 2 75 Gozzard St, GUNGAHLIN ACT 2912  
AUSTRALIA  
Tel: 1 800 830 091 (Australia) | (+61) 430 790 433 (Overseas)  
Email: [info@crtc.edu.au](mailto:info@crtc.edu.au)



**CANBERRA**  
BUSINESS & TECHNOLOGY COLLEGE

## Qualification Code and Title

---

### **CPC40120 Certificate IV Building and Construction (Building)**

CRICOS Course Code: 105972H

## Provider

---

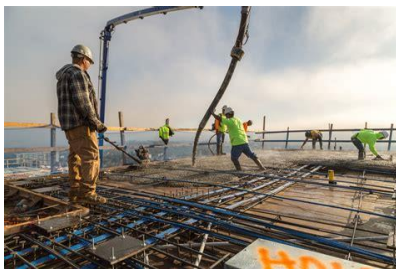
**The Canberra Training School Pty Ltd t/a Canberra Business & Technology College**

RTO Code: 40882  
CRICOS Provider Code: 03465J

## Course Overview

---

This qualification reflects the role of builders, site managers and managers of small to medium-sized building businesses who apply knowledge of structural principles, codes, standards and legal requirements to Class 1 and 10, to a maximum of two storeys and Class 2 to 9 Type C constructions, and who plan and supervise safe building and construction work, prepare and administer contracts, and who apply quality principles to building and construction projects. This qualification is designed as a “builder” occupational outcome.



Building relates to construction and Site Management is about managing the factors around construction, such as the deployment of crews with specialised skills

(including builders), product compliance, deployment of contract specialised skills, weather and site location

Course Details:

<https://training.gov.au/Training/Details/CPC40120>

## Entry Requirements

---

This course has the following entry requirements:  
International students must:

- Be at least 18 years of age.
- Have an IELTS score of 5.5 or equivalent (test results must be no more than 2 years old) with 5.0 in each band
- Have completed a Year 12 or equivalent high school certificate

Candidates will also be required to complete a pre-enrolment Candidate Self-Assessment as part of the application and participate in a course entry interview to determine suitability for the course.

## Course Duration

---

### **One (1) year full time**

*Total Duration:* 52 Weeks (including holidays and breaks)

*Contact Weeks:* 40 Weeks

This course will be delivered over a period of 52 weeks (including holidays). Classes will be scheduled for 40 weeks over 4 academic terms of 10 weeks each. There will be a 2-week break between the terms and a 6-week Christmas holiday end of the year.

Class sessions are planned to ensure that students have a mixture of practical and theoretical components, and those classes cater for a wide variety of learning styles. Additionally, workplace practices and environments are simulated and used to conduct skills-based assessments in accordance with unit requirements.